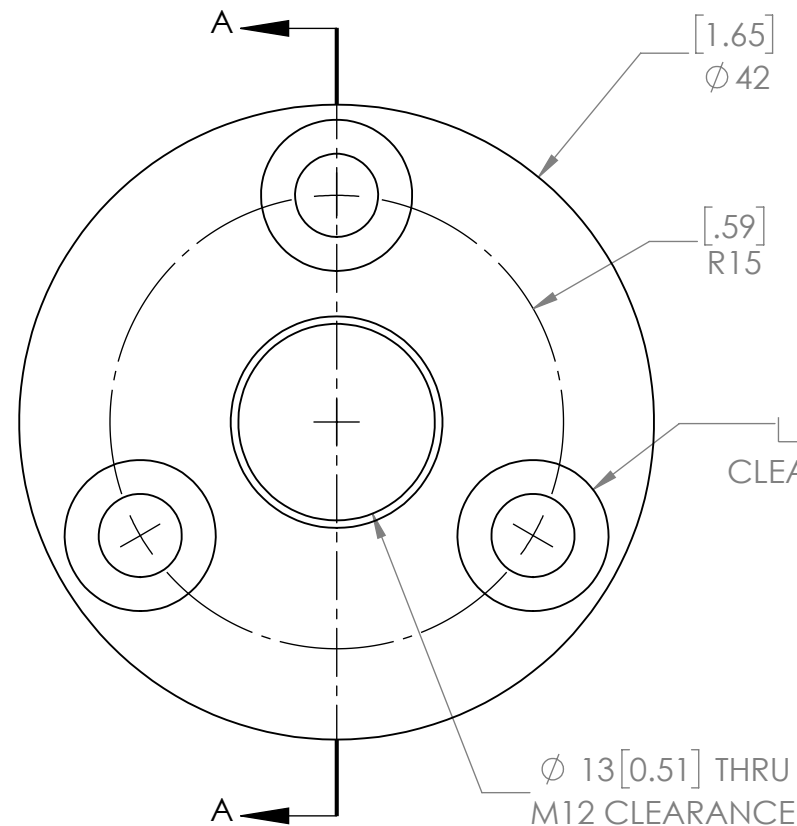
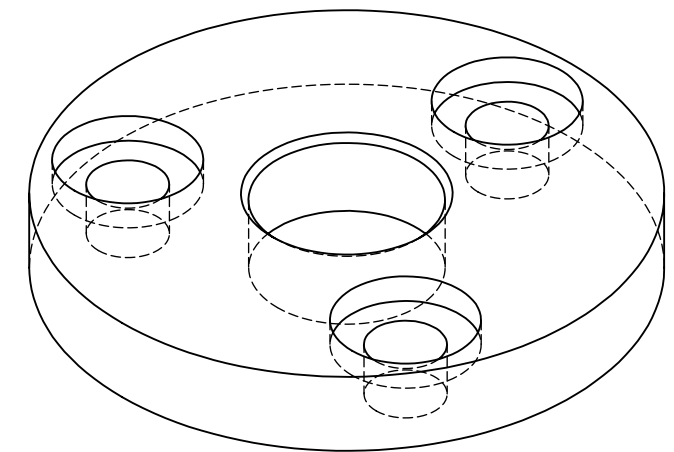


SECTION A-A



3X ϕ 5.50 [0.22] THRU
 ϕ 10 [0.39] ∇ 2 [0.08]
CLEARANCE M5 LOW PRO SHCS



Property of the Consortium for Advanced Radiation Sources (CARS)
This document is to be maintained in confidence by the receiving party. It is not to be published nor its contents otherwise disseminated without the express written consent of CARS, its managing agent The University of Chicago, or ARCH Development Corp. acting as CARS agent.

UNLESS OTHERWISE
SPECIFIED

GENERAL LINEAR ANGULAR
< 150mm \pm 0.25 \pm .25°
> 150mm \pm 0.5

SURFACE FINISH

DRAWN BY: **MJP** DATE: **6/1/2022**

CHECKED BY: DATE

DESIGNED BY: **MJP** DATE

PROJECT LEADER: DATE

MATERIAL:
SS 304
QTY 1

W.B.S. No.

ELECTRONIC FILE NAME:
Actuator Carrier_LTA HL PPV6

SIZE
B

FSCM NO

SCALE: **2:1**

DWG No.

ACTUATOR CARRIER

FINISH WT: **kg**

SHEET: **1 of 1**

THIS DRAWING IS THE PROPERTY OF



Consortium for Advanced Radiation Sources

The University of Chicago
Center For Advanced Radiation Sources
5640 South Ellis Ave., Chicago, Illinois 60637

LTA HL PPV6
MJOLNIR v2.0